



RP Advanced Mobile Systems™

2019 CATALOG



TACTICAL VEHICLE EQUIPMENT & WEAPONS INTEGRATION SOLUTIONS

**Get your 2018
RP Strike-M & RP Strike-M4
while they last!**
Limited availability, discontinued in 2019 line up.
Replaced by RP Strike-X & RP Strike-X4.

Bringing more ASSETS to the fight!



RP

Advanced Mobile Systems™

Veteran and Minority Owned Business

11160 SW Durham Lane, Suite 3
McMinnville, Oregon 97128

503-434-9446 | Fax 503-217-6080

CustomerService@RPAMS.com

DUNS: 829928139 | TIN: 26-4447775
CAGE Code: 5D2V2

Contents



About Us 2

RP Strike Vehicles

RP Strike-C, RP C2, RP Strike-C4 3-4

RP Strike-M, RP Strike-M4 5

RP Strike-X, RP Strike-X4 6

RP Strike-D3, RP Strike-D6 7

RP Tires

RP SOF Series II 8

RP SOF Series IV 8

RP SOF Series IV Magnum 8

RP SOF Spartan Series 9

RP SOF Talon Series 9

RP DELTA FX Desert 9

Power Bank/Jump Starters10

Elka Shock Absorbers11

Light Bars/Lights 12

RP Strike-Litter™ Rail System 13

Firefighting & Rescue14

Ride Mitigation Seats15

Accessories/Products 16-26

07092019



What We Do

Superbly intertwine form and function to create the most durable, lightweight, rugged UTVs available. RP Advanced Mobile Systems does exactly what it sounds like – we strip down Can-Am UTVs and build them back up to be the most advanced, customized mobile system for your mission, your purpose. Reliability, dexterity, speed ... Tell us what you need

your side-by-side to do. We'll tell you what it'll take to make it possible.

With direct feedback from military and first responders, we've continued to improve our designs over the years, adding more customization features as they're requested. You'll be amazed at how four vehicle lines – the Strike-C, Strike-M, Strike-D and Strike-X – become countless customized vehicles. Highly versatile. For any terrain. And unbelievably sexy too!

Future Capabilities

There are UTVs with a few upgrades ... And then there's RPAMS UTVs – Truly advanced mobility systems. From the beginning, every part of the RPAMS SXS has been built to stand up to the demands of combat. It was imperative that our UTVs help special forces and military personnel successfully complete their mission and make it home safe and sound.

Today, all RPAMS UTVs are still built with that combat toughness, but customized to fit your style, purpose, and lifestyle. Rely on our company promise to provide innovation and excellence in all of our vehicle systems and components.

For the extreme outdoorsman, carry your family, friends, tools, essential gear and even the occasional game! For the off-road enthusiast, get our fastest model with run-flats and test your limits! For commercial security, easily surveil and maneuver your site for swift protection. And for special forces, local law enforcement and emergency response, we work directly with you to design the UTV that fits your mobile mission, your team configuration, and helps you deflate your obstacles.



Turn-Key Vehicle Design Solutions

RP Advanced Mobile Systems (RPAMS) designs and builds the innovative 'Strike' upfit package for a variety of light tactical and all-terrain military vehicles as well as for the hardcore off-road enthusiast. From extreme outdoor sport UTVs to militarized off-road vehicles to the unique firefighting SXS – RPAMS prides itself in turn-key solutions for any off-roading need.

MANUFACTURING SERVICES

- ▶ Laser sintering systems which manufacture lightweight products of any complexity from polyamide or polystyrene materials directly from CAD data
- ▶ Custom Fabrication and Welding
- ▶ Variety of Vertical Mill CNC Machine Centers and lathes
- ▶ Build-To-Print manufacturing



RP STRIKE VEHICLES

Strike-C™ and **C2™** variant Can-Am Commander, **Strike-M™** variant Can-Am Maverick, **Strike-X™** variant Can-Am X3, and **Strike-D™** variant Can-Am Defender provide the most versatile side-by-side lightweight multi-modal kits for accomplishing critical functions in support of conventional military, commercial security, search and rescue, aid relief, U.S. Special Forces and law enforcement.

RP Strike-C™ variant Can-Am Commander DPS™/Max XT™



Strike-C



Strike-C4 with Apache 360 Track System



RP FireStrike-TR



Strike-C4



Strike-C with 4X6 TAG Axle Extension and Extra Seats

RP C2 (Command & Control) Standard Configuration

- ▶ RP Powdercoat, matte black
- ▶ RP tactical assault front push bumper with strut integrated payload track system and aerial transport tie-downs
- ▶ ITP Delta 12" steel wheels, matte black
- ▶ RP SOF Series II 12-PLY run-flat tires, 26x9x12
- ▶ Lithium iron phosphate battery for extended 12VDC capability
- ▶ Emergency lithium power pack
- ▶ RP Fatigue Mitigation Tactical Seat System (MOLLE, 1000D Cordura®)
- ▶ RP soft roof (MOLLE, 1000D Cordura®)



RP C2



NOTE: Images in this publication may depict products that are ITAR controlled and that may require an Export License. These images are for marketing use only.

RP Strike-C/C4 Standard Configuration
BASIC CAN-AM COMMANDER 2 OR 4 SEAT PLATFORM PLUS:

- ▶ RP Super Grit texture coating, tan, black, camo
- ▶ RP high-capacity, multi-modal tactical payload flatbed with lower storage
- ▶ RP multi-modal tailgate system for multiple tactical payload track configurations with Strike-C4 optional MEDEVAC integration*
- ▶ RP tactical assault front push bumper with strut integrated payload track system and aerial transport tie-downs
- ▶ RP rear push bumper assembly with aerial transport tie-downs
- ▶ Upgraded suspension for high-payload operations
- ▶ ITP Delta 12" steel wheels, black
- ▶ RP SOF Series II 12-PLY run-flat tires, 26x9x12
- ▶ RP Fatigue Mitigation Tactical Seat System (MOLLE, 1000D Cordura®)
- ▶ RP soft roof (MOLLE, 1000D Cordura®)
- ▶ C4: RP rear seating with best in-class legroom for rapid egress/ingress, seats fold forward for Stokes/NATO litter carriage in bed (1000D Cordura®)

VEHICLE SPECIFICATIONS

- ▶ 92 Hp, 1000R Rotax® 976 cc, V-Twin, liquid-cooled with iTC and EFI
- ▶ Tri-Mode Dynamic Power Steering (DPS™), CVT, L/H/N/R/P, selectable 2WD/4WD with Visco-Lok± QE auto-locking front differential
- ▶ Double A-arm front suspension with sway bar and torsional trailing arm independent rear suspension with external sway bar
- ▶ High-strength 2-inch diameter steel cage, ROPS-approved
- ▶ Anti-Theft: Digitally Encoded Security System (D.E.S.S.™)

DRY WEIGHT	1,700 – 1,950 lb	
DIMENSIONS (LxWxH)	Strike-C	123 x 60 x 72 in
	Strike-C4	123 x 60 x 60 in with Retracted Roll Cage
		152 x 60 x 76 in
		152 x 60 x 60 in with Retracted Roll Cage
WHEELBASE	Strike-C	75.8 in
	Strike-C4	106.1 in
GROUND CLEARANCE	11 in	
FUEL CAPACITY	10 gal	
PAYLOAD CAPACITY	Strike-C & RP C2	1,500 lb
	Strike-C4	2,000 lb
REAR BED CAPACITY	Strike-C & C4	1,000 lb
	RP C2 w/BRP Bed	600 lb
OPTIONAL FRONT RACK CAPACITY	250 lb	
TOWING CAPACITY	1,500 lb	



*NOTE: Does not include litter/stretcher device. Must be purchased separately.

RECOMMENDED OPTIONS

- RP high-load tactical team standoff nerf bar assembly/rock slider with stow mode for aerial transport
- RP modular ammo/fuel can/payload assembly
- Beadlock wheels
- Elka high-performance shock absorbers
- Baja Designs driving/blackout/IR lights & light bars
- Additional 12VDC & 24VDC outlets

ADDITIONAL OPTIONS

- RP Powdercoating, custom colors available
- HydroGraphic finishes, custom colors and patterns available
- Narrowing Kit: A-arms and trailing arms
- RP modular front cargo rack
- RP quick release articulating roll cage assembly for internal aerial transport
- RP SOF Series II 12-PLY run-flat tires, 26x9x14
- Apache 360 LT track & mounting kit
- Selectable RODS (Rear Open Differential System)
- RP keyless ignition system
- HID/LED light illumination
- RP integrated seat hydration packs
- RP 4-point static harness with quick release
- Antenna mount
- SatFi communication system/bundle
- Half windshield
- RP MEDEVAC integration*
- RP litter restraint, multi-modal and configurable rail system*
- PowerAll® jump start system
- RP initial spare parts kit
- RP 4X4 to 4X6 TAG axle extension
- Self-extracting 4500 lb winch

RP Strike-M™ variant Can-Am Maverick DPS™/Max DPS™



RP Strike-M/M4 Standard Configuration
BASIC CAN-AM MAVERICK 2 OR 4 SEAT PLATFORM PLUS:

- ▶ RP Super Grit texture coating, tan, black, camo
- ▶ RP high-capacity, multi-modal tactical payload flatbed
- ▶ RP multi-modal tailgate system for multiple tactical payload track configurations with Strike-M4 optional MEDEVAC integration*
- ▶ RP tactical assault front push bumper with strut integrated payload track system and aerial transport tie-downs
- ▶ Upgraded suspension for high payload operations
- ▶ ITP Delta 12" steel wheels
- ▶ RP SOF Series II 12-PLY run-flat tires, 26x9x12
- ▶ RP Fatigue Mitigation Tactical Seat System (MOLLE, 1000D Cordura®)
- ▶ RP soft roof (MOLLE, 1000D Cordura®)
- ▶ Forward/rear 2-inch receivers
- ▶ M4: RP rear seating with best in-class legroom for rapid egress/ingress, seats fold forward for Stokes/NATO litter carriage in bed (1000D Cordura®)

Get your 2018 RP Strike-M & RP Strike-M4 while they last!
Limited availability, discontinued in 2019 line up. Replaced by RP Strike-X & RP Strike-X4.

VEHICLE SPECIFICATIONS

- ▶ 101 Hp, 1000R Rotax® 976 cc, V-Twin with high-flow dynamics, liquid-cooled, iTC with EFI, and mid-engine layout for mass centralization
- ▶ CVT with Zylon-reinforced belt, L/H/N/R/P. Tri-Mode Dynamic Power Steering (DPS™)
- ▶ Double A-arm front suspension with sway bars and torsional trailing A-arms independent rear suspension with sway bars
- ▶ Selectable 2WD/4WD shaft driven with Visco-Lok± QE auto-locking front differential
- ▶ High-strength 2-inch diameter steel cage, ROPS-approved
- ▶ Anti-Theft: Digitally Encoded Security System (D.E.S.S.™)

DRY WEIGHT	1,700 – 1,950 lb	
DIMENSIONS (LxWxH)	Strike-M	129 x 64 x 74.2 in
	Strike-M4	129 x 60 x 60 in with Narrowing Kit & Retracted Roll Cage
		159 x 64 x 78 in
		159 x 60 x 60 in with Narrowing Kit & Retracted Roll Cage
WHEELBASE	Strike-M	84.3 in
	Strike-M4	113.8 in
GROUND CLEARANCE	Strike-M	13 in
	Strike-M4	12.5 in
FUEL CAPACITY	10 gal	
PAYLOAD CAPACITY	Strike-M	1,500 lb
	Strike-M4	2,000 lb
REAR BED CAPACITY	1,000 lb	
OPTIONAL FRONT RACK CAPACITY	250 lb	
TOWING CAPACITY	1,500 lb	



Bringing more ASSETS to the fight!

RECOMMENDED OPTIONS

- RP high-load tactical team standoff nerf bar assembly/rock slider with stow mode for aerial transport
- RP modular ammo/fuel can/payload assembly
- Beadlock wheels
- Elka high-performance shock absorbers
- Baja Designs driving/blackout/IR lights & light bars
- Additional 12VDC & 24VDC outlets

ADDITIONAL OPTIONS

- RP Powdercoating, custom colors available
- HydroGraphic finishes, custom colors and patterns available
- Narrowing Kit: A-arms and trailing arms
- RP modular front cargo rack
- RP quick release articulating roll cage assembly for internal aerial transport
- RP SOF Series II 12-PLY run-flat tires, 26x9x14
- Apache 360 LT track & mounting kit
- Selectable RODS (Rear Open Differential System)
- RP keyless ignition system
- HID/LED light illumination
- RP integrated seat hydration packs
- RP 4-point static harness with quick release
- Antenna mount
- SatFi communication system/bundle
- Half windshield
- RP MEDEVAC integration*
- RP litter restraint, multi-modal and configurable rail system*
- PowerAll® jump start system
- RP initial spare parts kit
- Self-extracting 4500 lb winch

*NOTE: Does not include litter/stretcher device. Must be purchased separately.

RP Strike-X™ variant Can-Am X3 Turbo™/Max Turbo™



RP Strike-X/X4 Standard Configuration

BASIC CAN-AM X3 PLUS:

- ▶ RP Super Grit texture coating, tan, black, camo
- ▶ RP high-capacity, multi-modal tactical payload flatbed
- ▶ RP multi-modal tailgate system for multiple tactical payload track configurations with optional MEDEVAC integration*
- ▶ RP tactical assault front push bumper with strut integrated payload track system and aerial transport tie-downs
- ▶ RP SOF Series IV Magnum, 8-PLY tires, 30x10x14
- ▶ Raceline Black Mambo 14" beadlock wheels, and extended lug nuts
- ▶ RP soft roof (MOLLE, 1000D Cordura®)
- ▶ RP soft quarter door panels (MOLLE, 1000D Cordura®)
- ▶ Forward/rear 2-inch receiver

VEHICLE SPECIFICATIONS

- ▶ 120 HP (172 hp¹), Rotax® 900 cc, ACE (Advanced Combustion Efficiency) turbocharged triple-cylinder engine, liquid-cooled with high-performance air filter
- ▶ Quick Response System X (QRS-X) CVT with high airflow, L / H / N / R / P. High-torque Tri-Mode Dynamic Power Steering (DPS™)
- ▶ Double A-arm front suspension with sway bar and Torsional Trailing A-arm X (TTX) rear suspension with sway bar
- ▶ Selectable 2WD / 4WD shaft driven with Visco-Lok[±] X auto-locking front differential
- ▶ Dual-phase 980 steel cage, fully welded
- ▶ Anti-Theft: Digitally Encoded Security System (D.E.S.S.™)

DRY WEIGHT	1,790-1,990 lb (depending on options)	
DIMENSIONS (LxWxH)	Strike-X	146 x 67 x 66 in
	Strike-X4	179 x 67 x 66 in
WHEELBASE	Strike-X	102 in
	Strike-X4	135 in
GROUND CLEARANCE	Strike-X	14 in
	Strike-X4	13 in

FUEL CAPACITY	10.5 gal	
PAYLOAD CAPACITY	1,000 lb	
REAR BED DIMENSIONS	48.5 (W) x 38 (L) x 8 in (H)	
	CAPACITY 1,000 lb with Elka Suspension and RP SOF Series Tires	
OPTIONAL FRONT RACK CAPACITY	250 lb	
TOWING CAPACITY	RPAMS Rear Bed: 1,500 lb BRP Bed: N/A	

ADDITIONAL MODELS AVAILABLE:

¹Strike-X R & Strike-X4 R
Upgraded power with the Rotax Turbo R 172 hp engine. 172 Hp, Rotax® 900 cc, ACE (Advanced Combustion Efficiency) turbocharged triple-cylinder engine, liquid-cooled with integrated intercooler and high-performance air filter.

Strike-XX rc aka the "Rock Crawler"
Includes an upgraded drive train, True 4 modes Traction System: 2WD / 4WD with front differential lock / 4WD ROCK / 4WD TRAIL, upgraded front and rear suspension with 18" travel. Additional Rock Crawler protection: Heavy-duty full High Molecular Weight (HMW) skid plate with differential and under bumper skid plates, UHMW rock sliders, front and rear suspension arm HMW protectors.

*NOTE: Does not include litter/stretchers device. Must be purchased separately.

RECOMMENDED OPTIONS

- RP high-load tactical team standoff nerf bar assembly/rock slider with stow mode for aerial transport
- RP modular ammo/fuel can/payload assembly
- Elka high-performance shock absorbers
- Baja Designs driving/blackout/IR lights & light bars
- Additional 12VDC & 24VDC outlets

ADDITIONAL OPTIONS

- RP Powdercoating, custom colors available
- HydroGraphic finishes, custom colors and patterns available
- RP modular front cargo rack
- RP SOF Spartan Series 12-PLY tires, Front: 29x9x14, Rear: 29x11x14
- HID/LED light illumination
- RP Fatigue Mitigation Tactical Seat System
- RP integrated seat hydration packs
- RP 4-point static harness with quick release
- SatFi communication system/bundle
- Half windshield
- RP MEDEVAC integration*
- RP litter restraint, multi-modal and configurable rail system*
- PowerAll® jump start system
- RP initial spare parts kit
- Self-extracting 4500 lb winch

RP Strike-D™ variant Can-Am Defender XT™/Max DPS™



RP Strike-D3/D6 Standard Configuration

BASIC CAN-AM DEFENDER 3 OR 6 SEAT PLATFORM PLUS:

- ▶ RP Super Grit texture coating, tan or black
- ▶ RP tactical front bumper
- ▶ RP modular front cargo rack
- ▶ RP duel NATO litter restraint system*
- ▶ Fox/Elka shock upgrade for high payload operations
- ▶ RP SOF Series II 12-PLY Run-Flat tires, 26x9x14
- ▶ 14" wheels

VEHICLE SPECIFICATIONS

- ▶ 72 Hp, heavy-duty HD10 Rotax® 976 cc, V-Twin, liquid-cooled with Intelligent Throttle Control (ITC) with Electronic Fuel Ignition (EFI)
- ▶ PRO-TORQ transmission with Quick Response System (QRS), high-airflow ventilation and Electronic Belt Protection Extra - L / H / N / R / P. Dynamic Power Steering (DPS™)
- ▶ Double A-arm front suspension and TTA rear suspension with external sway bar
- ▶ Lockable rear differential with Visco-Lok[±] QE auto-locking front differential
- ▶ Strike-D3: Electronic Hill Descent Control with ECO / Work / Normal modes
Strike-D6: Electronic Hill Descent Control
- ▶ ROPS-approved profile cage, Certified ISO 3471 and OSHA

DRY WEIGHT¹	Strike-D3	1,614-1,950 lb	
	Strike-D6	1,857-1,950 lb	
DIMENSIONS (LxWxH)	Strike-D3	124.2 x 62 x 78 in	
	Strike-D6	154.5 x 63.5 x 76 in	
PASSENGER	Strike-D3	Seats 3	Strike-D6 Seats 6
WHEELBASE	Strike-D3	83 in	Strike-D6 115.5 in
GROUND CLEARANCE	11 in		
FUEL CAPACITY	10.6 gal		
PAYLOAD CAPACITY	Strike-D3	1,750 lb	Strike-D6 2,000 lb
REAR BED CAPACITY	1,150 lb	California only: 600 lb.	
OPTIONAL FRONT RACK CAPACITY	250 lb		
TOWING CAPACITY	2,000 lb		

¹ Estimated weight, depending on options.

*NOTE: Does not include litter/stretchers device. Must be purchased separately.

RECOMMENDED OPTIONS

- RP high-load tactical team standoff nerf bar assembly/rock slider with stow mode for aerial transport
- RP modular ammo/fuel can/payload assembly**
- Elka high-performance shock absorbers
- Baja Designs driving/blackout/IR lights & light bars
- Additional 12VDC & 24VDC outlets



** Up to 400 mile range with dual RP fuel can holders.

ADDITIONAL OPTIONS

- RP Powdercoating, custom colors available
- HydroGraphic finishes, custom colors and patterns available
- RP SOF Spartan Series 12-PLY tires, Front: 27x9x14, Rear: 27x11x14
- Beadlock wheels
- HID/LED light illumination
- Antenna mount
- SatFi communication system/bundle
- Half windshield
- Full windshield
- RP MEDEVAC integration*
- RP litter restraint, multi-modal and configurable rail system*
- PowerAll® jump start system
- RP initial spare parts kit
- Self-extracting 4500 lb winch



RP SOF Series High Load Tactical Run-Flat & High Performance SXS ATV/UTV Tires

Military Authorized and Combat Proven! The RP SOF Series Tires are specifically designed and engineered for heavier payloads, wheel protection and survivability. The multiple PLY ratings offer the operator a unique advantage over the competition. ***Inflated or punctured, rely on the tire specifically constructed to keep you moving.***

- ▶ RP SOF Series tires have a tougher compound rubber and thicker sidewall than the comparable tires.
- ▶ Added bead-ring protection through a sidewall lip molded extrusion.
- ▶ An aggressive multi-directional tread and top notch construction make this tire incredibly versatile in austere conditions.
- ▶ A wide contact patch gives it the right amount of traction while reducing driver feedback.
- ▶ The reinforced sidewall design provides full protection with its unique wrapped tread design.
- ▶ Its lightweight PLY rating improves acceleration without sacrificing engine output.
- ▶ The specially engineered casing gives a stable ride and increased resistance to external penetration.
- ▶ Reduces the need for mixed vehicle front/rear tire sizes and mixed spares.
- ▶ Uniquely suited for operations in areas comprised of ironwood, shale and other harsh obstacles.



RP SOF Series II 8/12-PLY Rated 26-Inch Off-Road Tires

- 8- & 12-PLY Run-Flat (MIL PERF STD) capability increases operational survivability
- 1200+ lb load rating for the 12PR variant
- Focused design for 50 miles at 40 mph devoid of air at an impressive 900 lb per tire load
- Universal sizes 26x9x12 & 26x9x14, a true 26-inches (at max. operation pressure on a standard 6/7" wide wheel)

Series II & IV
12-PLY UTV & 8-PLY ATV Run-Flat

RP SOF Series IV 8/12-PLY Rated 27-Inch On/Off-Road Tires



- 8- & 12-PLY Run-Flat (MIL PERF STD) capability increases operational survivability
- Specially designed aggressive desert stylized multi-directional tread

- 1200+ lb inflated operational load rating for the 12PR variant
- Focused design for 50 miles at 40 mph devoid of air at an impressive 450 lb per tire load
- Type IV 8-PLY Performance Light-weight tire available for race and sport applications
- Universal 27x9x14 & 27x11x14 sizes, a true 27-inches (at max. operation pressure on a standard 6/7" wide wheel)
- Designed for heavier payloads, wheel protection and survivability



Strike-M4 with RP SOF Series II Tires

RP SOF Series tire mounted to a beadlock wheel provides the most outstanding survivability and off-road performance available today!



RP SOF Series IV Magnum 12-PLY Rated 30-Inch On/Off-Road Tires

- Designed for higher ground clearance on rough terrain
- Specially designed aggressive desert stylized multi-directional tread
- Universal Size 30x10x14, a true 30-inches (at max. operation pressure on a standard 6/7" wide wheel)

RP SOF Series: Deployed by U.S. Military and Law Enforcement ATV/UTV/LTATV Tactical Off-Road Operations



RP SOF Spartan Series Run-Flat SXS Tires

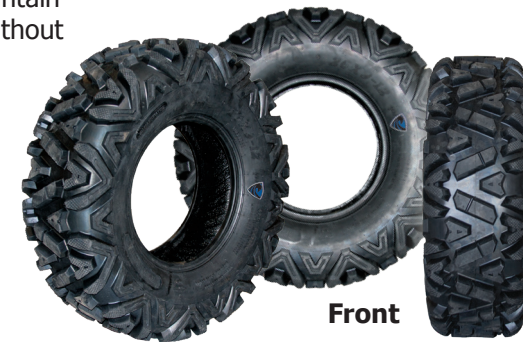
The **RP SOF Spartan Tires** are the perfect tire for hunters, ranchers, government agencies, oil fields, pipeline and power line companies around the world! If austere terrain creates mobility challenges, ***then this is the tire solution for your SXS UTV vehicle.***

- ▶ **This aggressive, military derived UTV Tire is ultra-durable and made to last.**
- ▶ The reinforced hybrid construction sidewall allows the tire to maintain its rigidity and actually run without air for a limited distance at payload. That means in the rare event you puncture one, you won't be left stranded.
- ▶ 12-PLY Run-Flat increases operational survivability. 1100+ lb load rating at maximum PSI with a 550 lb load, devoid of air.

- ▶ Universal sizes, a true 24-, 25-, 26-, 27- and 29-inch tire (at max. operation pressure on a standard 6/7" wide wheel).

- ▶ New size 24x11x10, the perfect tire for agriculture, farming and mining use.

See page 21 for sizes.



Front



Rear



RP SOF Talon Series On/Off Road Tires

SMOOTH RIDING. RUN-FLAT. WEAR-RESISTANT TREAD. From pavement to unexplored territory, choosing the **RP SOF Talon Series Run-Flat Tire** means you're choosing ***minimal road noise, optimal traction, and the opportunity to drive your UTV anywhere. Through anything.***

- Directional, self-cleaning, wear-resistant tread
- Optimal traction in a variety of conditions including mud, snow, hardpack, rock-covered and paved
- Smooth ride with minimal road noise
- Maximum wear/operational longevity
- Hybrid construction throughout, with a puncture and dent resistance sidewall
- DOT certified
- 1150+lb load rating at max PSI with a 550 lb load, devoid of air

**DOT
CERTIFIED**



Smooth riding. Run-flat. Wear-resistant tread.

Bringing more ASSETS to the fight!



RP DELTA FX Dune/Desert Tires

The **RP DELTA FX Tires** are engineered for current high horsepower UTV and SXS vehicles. The innovative staggered low profile paddle and centralized blade design allows for high flotation and movement on hard-packed surfaces with exceptional sand traction, while minimizing blade wear. The 27x10x14 and 27x13x14 sizes make this ***a perfect solution for your sand excursions on most SXS UTV platforms.***

- Durable 4-ply rated nylon cord construction
- 27-Inch height mounted
- Extra wide 5/8" center directional rib
- 24 tapered 5/8" reinforced directional paddles
- Staggered paddle design
- Tire weights: 27x10x14 22.3 lbs / 27x13x14 24.6 lbs



See page 21 for sizes.



RP Emergency Portable Power Bank/Jump Starter

Easy to use! It's the #1 selling lithium batter jump starter in the world for a reason! The PowerAll® Portable Power Bank is there when you need it most. When you have your 12V or 24V portable jump starter/ power bank, take any and every off-road required. Lightweight, compact and rechargeable.

Essential RP Power for Critical Situations!

- ▶ Portable Power Bank
- ▶ Battery Jump Starter
- ▶ Bright LED Flashlight
- ▶ Rechargeable High Capacity Lithium Battery
- ▶ Compact and Lightweight
- ▶ Battery Status LEDs
- ▶ Dual USB Charging
- ▶ Multi-Illumination
- ▶ DC and AC Power

Model	RP 12V JUMP STARTER	RP 24V JUMP STARTER USA
P/N with Hard Case	2400-8040-12V-C	2400-8050-24V-C
P/N with Soft Case	2400-8040-12V-M	2400-8050-24V-M
Battery Type	Lithium Ion	Lithium Ion
Battery Capacity	18,000 mAh	32,000 mAh
Watt Hours	66.6 Wh	118.4 Wh
Peak AMPS	700A	800A
Jump Start Current	350A	900A
Battery Life Cycles	>1,000	>1,000
Standby	3-6 Months	6-12 Months
Outputs	Micro USB: Apple Lightning 12V Jump Start 19V/3.5A Computer (optional)	2 x 5V/2.1A USB 24V Jump Start
Input	DC 90-264VAC AC 14V/1A	DC 25.5V/1A AC 100-240V
Additional Battery Life for Smartphones	Charges iPhone 6+, 4 to 5 times	1600% more
Additional Battery Life for Computers (opt.)	Powers a Laptop 2 to 3 hours	N/A
LED Life-span	100,000 hours	100,000 hours
LED Energy	1w	1w
LED Lumens	86 Lm	86 Lm
Unit Dimensions	8.27 x 3.78 x 1.30" 210 x 96 x 33mm	8 x 3.75 x 1.5" 203 x 95 x 38mm
Weight	28.4 oz / 805 g	28.8 oz / 816.5 g
Vehicles	12-Volt (4-8 Cylinder)	24-Volt Vehicle Use Only!

Model	POWERALL SUPREME
Battery Type	Lithium Ion
Battery Capacity	16,000 mAh
Watt Hours	59.2 Wh
Peak AMPS	600A
Jump Start Capacity	7.0L Engine
Battery Life Cycles	1,000
Standby	6-12 Months
USB Outputs	2 x 5V/2.1A
Unit Dimensions	6.7 x 3.1 x 1.25" 17.02 x 7.87 x 3.18cm
Weight	14 oz / 396.89 g
Vehicles	12-Volt (4-8 Cylinder)

Model	POWERALL JOURNEY
Battery Type	Rechargeable li-polymer
Battery Capacity	16,000 mAh
Play Time	12 hours at max. volume
Watt Hours	59.2 Wh
Max. Continuous Discharge/Jump Starter	600A
USB Outputs	2 x 5V/2.1A
LED Lumens	100-110LM
External Power Supply Output	AC100-240V 50/60Hz 15V 1.5A
Speaker Type	1.0 channel audio
Speaker	45mm full range
Speaker Power	5W, true RMS power
Bluetooth Standard	4.0 +EDR
Bluetooth Agreement	A2DP AVRCP
Transmission Distance	10M
SN Ratio	72dB
Frequency Response	45-20KHz
Water Resistance / IPX5	



12V | Power Bank/Jump Starter USA

Capable of jump starting your battery up to 20 times on a full charge! It's compact and convenient to keep with you at all times for emergency use. Never call a tow truck service or wait on the side of the road helpless ever again. Comes with it's own jumper cables, that are easy to use to jump start multiple types of vehicles. With the Switching Wall Charger and adapters, you can plug into and charge the RP Power Bank in most electrical outlets World Wide.



24V | Power Bank/Jump Starter USA

The only commercial use portable 24V jump starter. It has sufficient amp power to jump start a 24V city transit bus equipped with two group 8D batteries running 1,300 CCA or a Humvee. It's easy to use, simply connect the Convoy battery cables to the vehicle battery and start the vehicle in seconds. Ideal for department of transportation, construction and military vehicle use.

WARNING: DO NOT USE THIS TO JUMP START YOUR 12V VEHICLE, IT CAN SERIOUSLY DAMAGE THE VEHICLE. THIS IS FOR 24V VEHICLE USE ONLY! RP ADVANCED MOBILE SYSTEM WILL NOT BE LIABLE FOR ANY MISUSE OF THIS PRODUCT BY THE USER.



SUPREME | Power Bank & Emergency Jump Starter

16,000 mAh - Convenient and easy to use. The Supreme can jump start your vehicle 20 times on a full charge. Take it with you everywhere to charge all your portable devices. It's equipped with two 5V/2.1A USB ports to charge two devices at the same time. Includes an Emergency LED flashlight with SOS signal. Flash lasts up to 120 hours on a full charge. Also available: Deluxe - 12,000 mAh | Goliath - 32,000 mAh

JOURNEY | Power Bank, Emergency Jump Starter & Bluetooth Speaker

The first all-in-one portable 600A 12V vehicle jump starter and portable power bank with a built-in SW Bluetooth™ speaker. The Journey is powerful enough to jump start a V8 engine, small enough to carry anywhere. It comes with two 5V/2.1A USB ports to power up all your portable devices. This unit is the world's first to include a 5W speaker with advanced technologies and audiophile sound tuning.



UTV Performance & High-Performance Shocks

High-performance suspension upgrades from the leaders in Powersports Shock Absorbers. Increase your speed, control, adjustability and comfort with Elka Suspension's application-specific shock absorbers. **Performance shocks that will release the power in your UTV.**

STAGE 3

Elka's most popular model to improve the handling and increase the capabilities of the vehicle for recreational and intensive applications.



BENEFITS

- ▶ Allows the operator to carry more speed over rough terrain and bumps
- ▶ Helps increase stability, traction and protection against impacts
- ▶ Reduces excessive weight transfers, such as body roll during cornering, diving when braking hard and squatting under hard acceleration

FEATURES

- ▶ Low-speed compression
- ▶ Treaded Spring Preload

STAGE 4

High-Performance shock absorbers that provide Elka's latest technology and simplicity of use for very intensive applications.



BENEFITS

- ▶ Allows the operator good control and adjustability over key damping parameters without too much complexity
- ▶ Better protection against harsh square-edged impacts and potholes
- ▶ Further increased traction in all conditions for maximum maneuverability

FEATURES

- ▶ Low-speed compression
- ▶ Rebound Damping
- ▶ Treaded Spring Preload

STAGE 5

The ultimate race-level high-performance shock absorbers that provide total control over all damping aspects to achieve maximum speed and optimal handling.



BENEFITS

- ▶ Allows the operator precise fine-tuning of all parameters of the suspension, without the need to compromise
- ▶ Provides optimal damping characteristics regardless of the terrain conditions or obstacles encountered
- ▶ Ideal choice for extreme applications where performance and adaptability are critical to overcome the challenges and execute your mission

FEATURES

- ▶ High-speed & Low-speed compression
- ▶ Rebound Damping
- ▶ Treaded Spring Preload with Adjustable Crossover Lockrings



Bringing more **ASSETS** to the fight!

Available sizes Stage 3, 4, and 5 front and rear shocks 36mm or 46mm, 56mm (Stage 5 only), sold as a pair.



Off-Road LED Lights & Light Bars

Baja Designs is the leader in high performance off-road lighting technology, with over 30 years of off-road racing and engineering experience. Baja's line of high performance LED lights and LED light bars offer the highest quality LEDs currently available, combined with the finest optics and race proven durability. Each LED light and LED light bar has been hand-crafted and assembled in the USA. The CNC machined, billet extrusion offers a rock solid housing to securely hold each LED, lens and precision engineered optics firmly in place to ensure a long life and superior performance under extreme conditions.



FEATURES:

- ▶ Available in infrared and white light, as well as infrared only (IR)
- ▶ Weight: 1.75 LBS (IR only)
- ▶ Longer life expectancy than HID, brighter, cheaper, with reduced heat signature

SPECIFICATIONS:

- Utilizes 2 Osram IR chips
- Radiant Intensity: 2800mW/sr
- Power Consumption: 35W, 2.5A @ 13.8V, 1.27A @ 27.6V
- Utilizes T6 Bin Cree XML LEDs at 5000K color temperature
- 25,000 hour LED life expectancy
- Reverse battery & Transient Voltage Suppressor (TVS) protection



Part Number	Description	Input Voltage (DC)	Raw Lumens Output	Watts Input	H inches	W inches	L inches	Weight (LBS)
OnX IR LED Light								
45-0499	OnX 4" IR(Infrared) LED Light	9-36	1,800	35	2.2	4.0	4.2	1.75
OnX IR & White LED Light								
45-1299	OnX 12" IR & White LED Light	9-36	5,400	75	2.2	12.0	4.2	4.0
Patterns	The OnX IR(Infrared) Lights are available in multiple patterns and sizes, for more information please call Baja Designs.							



FEATURES:

- ▶ Available in four configurations. Combo, Spot, High speed spot and Wide-Driving utilizing Clearview Multi-Form Optics
- ▶ Weight: 2.5 LBS per 8" Section

SPECIFICATIONS:

- Total Lumens: 3600 per 8" section
- Stainless steel fasteners and mounts
- Power Consumption: 42 watts
- Utilizes T6 Bin Cree XML LEDs at 5000K color temperature
- 25,000 hour LED life expectancy
- Reverse battery & Transient Voltage Suppressor (TVS) protection

Light available with Spot, High Speed Spot, Driving/ Combo, Wide Driving in 8", 15", 22", 30", 37", 44", 51" lengths
Amber Wide Driving in 8", 15", 22" lengths

uService - User Serviceable Lenses & Optics

Coppercore Thermal Heat Management System

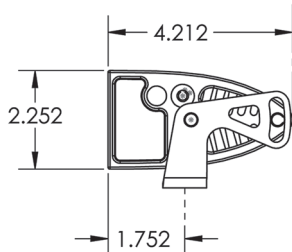
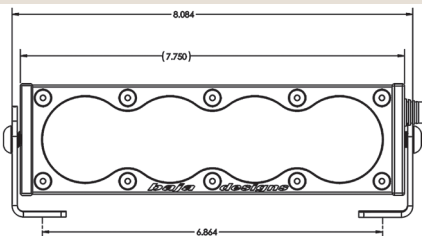
Hard Coated Polycarbonate Lens

Lifetime Warranty



BAJA DESIGNS STANDARDS OF COMPLIANCE:

- MIL-STD-810G Certified (Low Temperature Test, High Temperature, Temperature & Humidity, Thermal Shock Cycling, Dust, Random Vibration, Mechanical Shock, Low Pressure, & Drip Box Water)
- IP69k - (submersible to 9ft)
- Salt Spray Certified



Additional Lighting Options on Page 23

For more information visit www.bajadesigns.com



RP Strike-LITTER RAIL™ SYSTEM

One of the most physically and mentally challenging situations an individual can face is casualty evacuation. Casualties must be moved quickly and safely. Every second wasted decreases the casualty's chance of a speedy recovery.



SPECIFICATIONS:

- Dual rails of varying lengths
- 4 Locking slide restraint devices (each, per litter)
- Litter security pins

Medical Evacuation Systems can be installed on any vehicle to facilitate SXS Military Litter Transport



NOTE: Does not include litter/stretchers device. Must be purchased separately.



LITTER RAIL SYSTEM:

- ▶ Provides an effective casualty evacuation platform that is easy to employ, versatile and compact enough to be installed on multiple vehicle systems during an assault or long transports.
- ▶ Possesses an innovative slide rail system that provides a rapid and flexible means of restraining military casualty litters during vehicle movement without compromising the vehicle's ability to maneuver through the most demanding environments.
- ▶ Eliminates the need for conventional MEDEVAC capable support vehicle and casualties can be secured and transported off target without excess time spent rigging and securing or allocating an effective area to load the litter.
- ▶ The rails can be fabricated to any length in order to facilitate any number of litter restraint slides for any number of litters, the limiting factor being the vehicle compartment itself.



- ▶ The litter restraint slide latches can slide and lock in any lateral position to facilitate the best location for litter placement. This function ensures casualties are secure but accessible for medical assessment and care, as well as facilitating storage of critical medical supplies in restricted confines.
- ▶ When not employed, the rail low profile and latch slide/stowage allows for continued functionality of the vehicle cargo area.



See page 26 for additional information.



Certified Modular Firefighting Skids

In the firefighting industry a "Quick Attack" is a term used for small mobile fast response vehicles. QTAC is short for "Quick Attack" and these firefighting skids meet the challenge for affordable, lightweight, professional-grade fire protection and prevention. Combine the highly mobile RP Strike-C with the all metal external bed cargo system and QTAC firefighting skid and you have a vehicle that will not be denied access in the most austere fire afflicted environments carrying maximum equipment for fire response.



The **QTAC™ 85S** features an 85-gallon, welded-copolymer tank, max-132 GPM pump with a 6 hp engine, 50-feet of 3/4" hose and, like all of the QTAC products, the ability to draft out of an auxiliary water source like a pool or creek. This is a highly capable piece of personal firefighting equipment.

Though the 85S was designed to fit in nearly all side-by-side UTVs, it's light enough for two people to easily lift it into the back of a pick-up truck. The QTAC truck mount kit allows the system to be strapped into place anywhere in the bed. If you'd like the ability to apply Foam A Retardant, simply mix the concentrate in the tank and purchase the Scotty 8 GPM air-aspirating nozzle.



If you're looking for a piece of personal firefighting equipment that is a great combination of lightweight, simplicity, and exceptional pumping power, the QTAC 85S is the firefighting skid for you.



The **QTAC 85EMS-C** is a UTV EMS firefighting skid system with a unique, flip-down rescue basket platform. This convertible design allows for a compact footprint that utilizes the standard 85S tank, but still allows for a full-size rescue litter to be strapped into place once the platform is secured in the down position. When stored in the folded position, the top-mounted platform is compact enough for the tailgate to be closed on a standard-size, short-bed UTV. This makes the 85EMS-C the most versatile system in our line-up.



See page 26 for more information.



QTAC UNITS INCLUDE

- 85-Gallon welded-copolymer tank
- 132 GPM 6 hp gas-engine pump
- High-pressure pump
- Brass bulls-eye nozzle
- Brass shut-off valve
- Lifting handles
- Copolymer hose rack
- 50-Feet of 3/4" hose
- Lid vent
- Drafting capabilities
- Premium components
- 3/4" Drain (85S)
- 1-1/2" Drain (85EMS-C)
- Available in white or red (85S only)
- Hannay manual hose reel (85EMS-C only)
- Folding, copolymer rescue basket platform (85EMS-C only)

PUMP SPECIFICATIONS

- Self-Priming
- 2" Pump
- Max Output: 132 GPM @ 1 PSI
- Max Pressure: 127 PSI
- Pressure with 10 GPM Nozzle: 124 PSI
- Pressure with 50 GPM Nozzle: 100 PSI

85S/85EMS-C KIT OPTIONS

- Draft kit
- Optional nozzles & hose
- Truck mount
- End-of-the-Line gel kit
- Hannay hose reel (Standard on 85EMS-C)

Other configurations available.

NOTE: Does not include litter/stretchers device. Must be purchased separately.



RP Fatigue Mitigation Tactical Seat System

This innovative tactical seat system was developed and designed specifically for the LTATV and the mobilized warfighter but is comfortable for all. **The Fatigue Mitigation Seat System incorporates a suspension seat architecture, which actively reduces shock and stress to vehicle occupants.**



- ✓ Suspension lining construction provides comfort and reduces impact on occupant.
- ✓ Powder coated steel frame with rip-stop vinyl coated nylon suspension liner.
- ✓ High-impact, dual-density foam for added comfort.
- ✓ MOLLE sewn into seat back and lower front for quick attachment stowage options.

Additional Seat Options

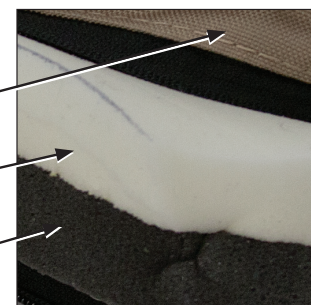
- Integrated hydration pack
- Folding low back seat

High Impact, Dual-Density Foam Seat Construction

1000D Cordura® Nylon Tear Resistant Fabric

Memory Foam

Closed Cell Foam



See page 20 for more information.



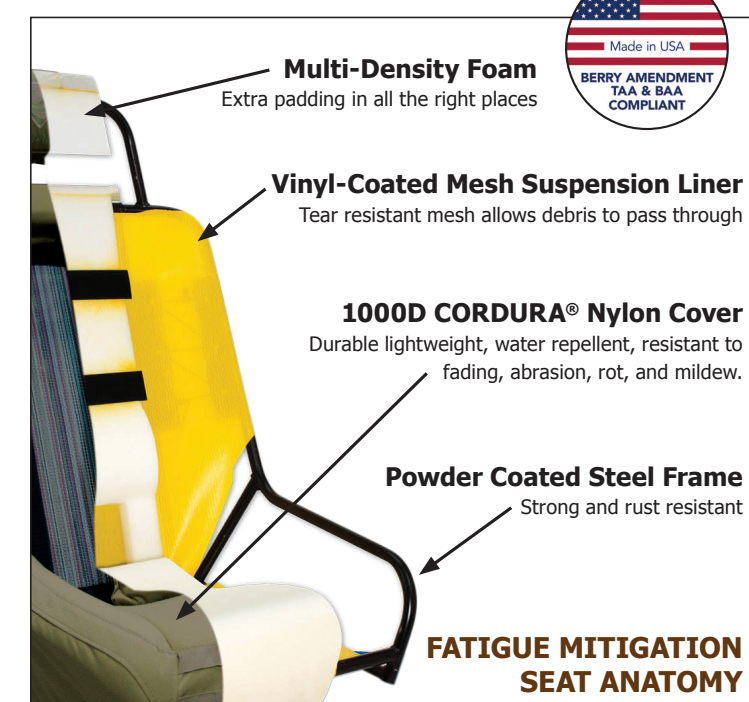
The RPAMS seat enhances the complete vehicle system in mitigating ride shock

This ultimately ensures that specialized warfighters are better able to achieve their light mobility objectives in the most dynamic terrain conditions.

FEATURES

- Each seat is US custom made.
- Competitively priced compared to replacement OEM seats.
- Constructed with a minimal profile to effectively conform to the warfighters body while enhancing occupant station space.
- Horizontal 'g-wing' seat bottom design, supports occupant during lateral forces and g-outs.
- Designed to facilitate 4-point dual shoulder harnesses.
- Configurations with OEM base available for: LTATV Kawasaki Teryx, RP StrikeRazor™, Can-Am Commander and Maverick, Polaris MRZR/SW/XP, Arctic Cat Prowler, Gator and Yamaha Rhino.
- Multiple colors available

Bringing more **ASSETS** to the fight!



Multi-Density Foam
Extra padding in all the right places

Vinyl-Coated Mesh Suspension Liner
Tear resistant mesh allows debris to pass through

1000D CORDURA® Nylon Cover
Durable lightweight, water repellent, resistant to fading, abrasion, rot, and mildew.

Powder Coated Steel Frame
Strong and rust resistant

FATIGUE MITIGATION SEAT ANATOMY



RP Advanced Mobile Systems Coatings, Components & Accessories

Vehicle & Accessory Coatings & HydroGraphic Finish



RP Super Grit Texture Coating

Our standard vehicle coating. A super grit, extremely unique with an aggressive texture. Available in tan, black and camo.



RP Powdercoat

A corrosion-resistant finish, harder and stronger than liquid paint. A dry powder is applied electrostatically, and heat cured. Black, tan and custom colors available.



HydroGraphic Finish

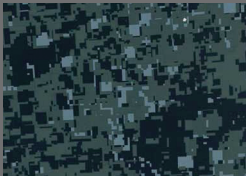
HydroGraphic exterior laminate finishes are created using a simple water transfer printing process. The HydroGraphic process can be used on any 3D object that can be dipped in water or painted. This process provides full 360° coverage including small crevices and can utilize very

detailed graphics. There are many stock patterns available (shown here a just a few). Visit www.watertransferprinting.com for more patterns available. We can also accommodate custom patterns.

PART NO. / FEATURE	
HYDRO-PNL-2	TPO Plastic Body Panels
HYDRO-KIT-2	RP Kit/Plastic Body Panels/Rollcage



Tiger Stripe Desert Digital WTP-275



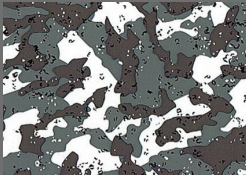
Tiger Stripe Navy WTP-275



Tiger Stripe Urban Digital WTP-275



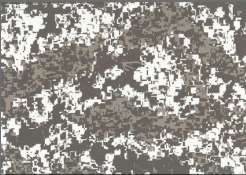
Digital Illusion MC-231-A



Grey & Blue MC-74-A



All Terrain Digital Tiger Stripe WTP-273



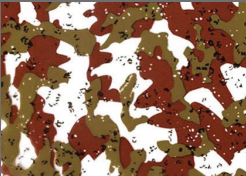
ACU Digital Tiger Stripe WTP-382



Camo Urban WTP-407



Desert/Kings Shadow WTP-366



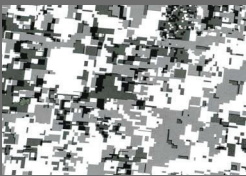
Green, Tan & Clear Army MC-0-14C



Desert Digital Tiger Stripe WTP-274



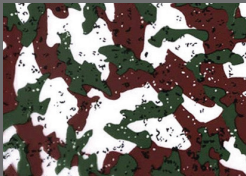
Multicam Camo WTP-297



Snow Leopard WTP-460



A-TACS v.2 WTP-452



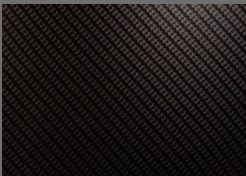
Dk Green, Dk Brown & Clear Army MC-04-C



Woodland Digital Tiger Stripe WTP-272



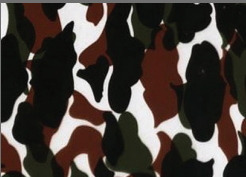
Illusion Camo MC-211-A



Silver Bias Carbon WTP-454



Camouflage/True Leaf WTP-109



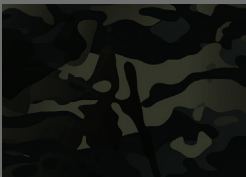
Clear, Brown, Green & Black MC-721-A



Urban Digital Tiger Stripe WTP-275



Illusion Camo MC-221-A



MultiCam Black WTP-787



RP Advanced Mobile Systems Coatings, Components & Accessories

Tactical Vehicle Body Armor, Exterior Accessories & Upfits



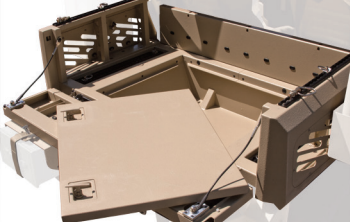
RP Articulating Roll Cage

The quick release articulating roll cage is designed for vehicle carriage in low vertical aspect ratio compartments such as CV-22, CH-47, low profile trailers and other means of compartmentalized transport. It's reinforced, toolless hinged construction is designed to maintain the OEM ROPS capability while providing unparalleled mission flexibility.

PART NO. / FEATURE	
6600-8010	RP Cage Strike-C, M
6600-8020	Stock Cage Strike-C4, M4



Shown Strike-C with RP Cage Utilized



RP Strike-C/C4 Tactical Assault Front Push Bumper

Designed for rigorous action in demanding environments. Reinforced aluminum, incorporated clevises, winch compatibility, durable rubber guards and tracks.

PART NO. / FEATURE	
2501-8000	Standard Strike-C, C4
2501-8005	60" Cage Strike-C, C4

RP Strike-C/C4 Multi-Modal Tactical Flatbed

Includes internal storage compartment and multi-purpose track assembly. Dimensions: 28.75 x 48.5 x 11". Lower dimensions: 24 x 25.5 x 8". (Does not include tailgate.)

PART NO. / FEATURE	
2502-8000	Strike-C, C4

RP Strike-C/C4 Tactical Assault Rear Push Bumper

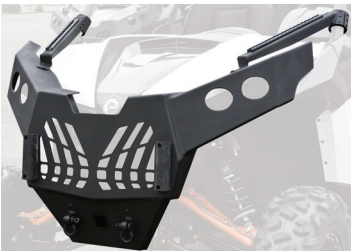
Provides utility and durability with multiple tie-down points. Reinforced aluminum to increase push/pull capability.

PART NO. / FEATURE	
2502-8010	Strike-C, C4

RP Modular Front Cargo Rack

Designed to quickly tie in to the aviation track restraint system. Folds for rapid hood entry and maintenance/servicing. Reduces machine noise. With a 250 lb payload capability the operator is able to carry critical supplies to the destination.

PART NO. / FEATURE	
2501-8017	Strike-C, C4
2501-8020	Strike-M, M4
2501-8030	Strike-X, X4
2501-8040	Strike-D3, D6



RP Strike-M/M4 Tactical Assault Front Push Bumper

Designed for rigorous action in demanding environments. Reinforced aluminum, incorporated clevises, winch compatibility, durable rubber guards, 2" receiver and tracks.

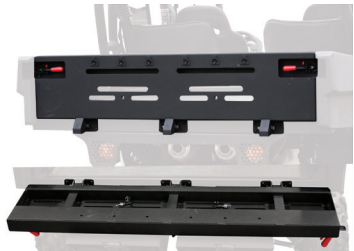
PART NO. / FEATURE	
2501-8010	Standard Strike-M, M4
2501-8015	60" Cage Strike-M, M4



RP Strike-M/M4 Multi-Modal Tactical Flatbed

RP Flatbed Assembly with 2-inch receiver, strut, and tie-down assembly. Dimensions: 36 x 48.5 x 11". (Does not include tailgate.)

PART NO. / FEATURE	
2501-8030	Strike-M, M4



RP Strike-Kit Standard Heavy-Duty Tailgate

Lightweight and robust design with aircraft style restraint tracks, reinforced modular stowage device receptacles and dual latching mechanisms for added security. Adds 13" to bed length when down.

PART NO. / FEATURE	
6400-8000	Strike-C, C4, M, M4



RP Advanced Mobile Systems Coatings, Components & Accessories

Tactical Vehicle Body Armor, Exterior Accessories & Upfits



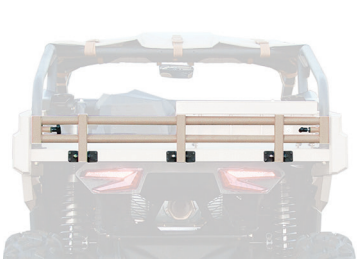
RP Strike-X Tactical Assault Front Push Bumper
Designed for rigorous action in demanding environments. Reinforced aluminum, incorporated clevises, winch compatibility, durable rubber guards and tracks.

PART NO. / FEATURE	
2501-8030	Standard Strike-X, X4



RP Strike-X Multi-Modal Tactical Flatbed
Includes internal storage compartment and multi-purpose track assembly. Reinforced aluminum with steel infrastructure. (Does not include tailgate.)

PART NO. / FEATURE	
2502-8050	Strike-X, X4



RP Strike-X Rear Tailgate
Tube style tailgate. Reinforced aluminum with steel infrastructure. 200 lb capability.

PART NO. / FEATURE	
2502-8030	Strike-X, X4



RP Strike-D Tactical Front Bumper
Designed for rough terrain in demanding environments. Reinforced aluminum, winch compatibility, durable rubber guards and tracks.

PART NO. / FEATURE	
2501-80XX	Strike-D3, D6



RP Standoff Nerf Bar
Designed for structural protection and tactical team standoff. When extended (toolless), capable of carrying fully kitted passengers (police/military response recommended only). Serration for added traction.

PART NO. / FEATURE	
5700-8000	Strike-C, M, X, D3
5700-8010	Strike-C4, M4, X4, D6



Delta Fury Running Boards
This nerf bar style running board is designed to take abuse. The flat platform is capable of carrying fully kitted passengers (police/military response recommended only).

PART NO. / FEATURE	
Call for more information.	



Hard Cab Enclosure System
Hard cab enclosure with glass windshield, roof with ventilation, back panel with window, doors, wipers and heater. Optional slider in back window.

PART NO. / FEATURE	
CAB-COM-BLK	Strike-C
CAB-MAV-BLK	Strike-M



RP Strike-C/C4 Clamp On Spare Tire Mount
Easy clamp on spare tie mount compatible with Can-Am SxS models.

PART NO. / FEATURE	
2504-8050	Strike-C, C4
Available for other models, call for more information.	

RP Strike-D is here!

This vehicle is an all terrain, workhorse and ready to take on any job.





RP Strike-C/C4 Clamp On Spare Tire Mount
Easy clamp on spare tie mount compatible with Can-Am SxS models.

PART NO. / FEATURE	
2504-8050	Strike-C, C4
Available for other models, call for more information.	



RP Modular Ammo/Fuel Can/Payload Holder
These multi-modal quick release can assemblies provide external storage for fuel, ammo and MEDEVAC systems, and extends the internal payload capability.

PART NO. / FEATURE	
2504-810-XXX	All models



RP Advanced Mobile Systems Coatings, Components & Accessories

Tactical Vehicle Interior Accessories & Upfits



RP Soft Roof
This removable cover provides protection from the sun and elements and incorporates under-surface MOLLE for added equipment modularity. Tear resistant 1000D Cordura®. Black, Tan, OD Green, Desert Digital Camo.

PART NO. / FEATURE	
2503-0120-XXX	Strike-C, M
2503-0130-XXX	Strike-C4, M4
2503-0135-XXX	Strike-X, X4



Poly Roof
Polymer (TPO). Factory Can-Am.

PART NO. / FEATURE	
Strike-C, M	
715001679	Black
715001444	Next G-1 Vista Camo
715003061	Mossy Oak Break-Up Camo
Strike-C4, M4 with Tinted Skylight	
715001967	Black
715002504	Light Grey



Aluminum Roof
Constructed of lightweight aluminum for occupancy coverage. A must have for austere environments when occupant protection is critical. 2- and 4-seater sizes available.

PART NO. / FEATURE	
2504-2035	Strike-C, M
2504-2030	Strike-C4, M4



RP MOLLE Door Panels
Replaces OEM plastic door panels. MOLLE on both sides for storage. Fastens with Velcro. Additional colors available. Order flags separately, custom designs available.

PART NO. / FEATURE	
2503-0137-XXX	Strike-X only
2503-0139-XXX	Flags



Roll Cage Grab Handles
Made of nylon webbing, quickly adjustable and easy to relocate. Adjusts to fit a 1.75 to 2" roll cage.

PART NO. / FEATURE	
2503-0140-Black	12"
2503-0140-Tan	12"
2503-0145-Black	16"
2503-0145-Tan	16"



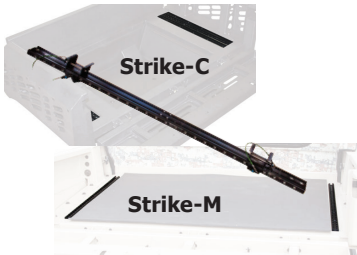
Half Windshield
The half windshield deflects most dirt and rain while permitting flow-through of air during vehicle movement.

PART NO. / FEATURE	
2504-0051	Strike-C, C4 - 13.5-inch
2504-0052	Strike-M, M4 - 13-inch
Call for information on X & D series	
Call for information on Full Windshields	



RP 4X6 Tag Axle Extension
A removable, fully suspended dual tag axle system. It allows for significant loads, high speed stability and dexterity in extreme conditions. Capabilities of 6x6 while retaining the flexibility of a 4x4 when detached. (Requires 2 wheels, tires and lug nuts, sold separately.)

PART NO. / FEATURE	
2502-8015	4X6 TAG Axle



RP Litter Rail System*
Provides an effective casualty evacuation platform. Compact, easy to employ. Dual rails of varying length, 4 locking slide restraint devices (each, per litter), litter security pins.

PART NO. / FEATURE	
2504-8040	All Models

NOTE: Does not include litter/stretchers device. Must be purchased separately.



RP Grab Harness Bar
The Harness Bar is a bolt-on device designed to provide a structural mount for shoulder harnesses and add to the rigidity of the ROPS cage.

PART NO. / FEATURE	
6600-0485	All Models





RP Advanced Mobile Systems Coatings, Components & Accessories

Tactical Vehicle Interior Accessories & Upfits



RP Fatigue Mitigation Tactical Seat
Standard, high-back seat with RP custom shock mitigation seat system. Removable back cushion. Black, Tan.

PART NO. / FEATURE
2504-1000-XXX High-Back



RP Fatigue Mitigation Tactical Hydro Pack Seat
Standard, high-back seat with RP custom shock mitigation seat system and built-in Hydro pack. Removable back cushion. Black, Tan, Coyote Tan, and Digital Tan.

PART NO. / FEATURE
2504-1005-XXX Hydro High-Back



RP Fatigue Mitigation Tactical Folding Seat
Standard, low-profile back seat. Folding seat with RP custom shock mitigation seat system. Removable back cushion. Black, Tan, Coyote Tan, and Digital Tan.

PART NO. / FEATURE
2504-1003-XXX Folding Low-Profile



RP Fatigue Mitigation Tactical Bench Seat
Standard low-profile back bench seat, with RP custom shock mitigation seat system. Non-removable back cushion. Black, Tan, Coyote Tan, and Digital Tan.

PART NO. / FEATURE
2505-8010-BLK

Custom Colors & Fabrics Available Upon Request. For More Information on RP Fatigue Mitigation Tactical Seats See Page 15.



RP 4-Point Static Harness
Made for long-endurance comfort and with critical safety in mind. Equipped with military grade nylon webbing and pressure reducing waist pads. Simple push button release system. 2" H-Style with latch.

PART NO. / FEATURE
2504-8015 Rear
2504-8017 Front



Interchangeable Seat Bracket Assembly
OEM seats are not laterally interchangeable (left to right and vice-versa). These brackets allow for the swap and can be used for the RP Fatigue Mitigation and aftermarket seats.

PART NO. / FEATURE
2504-1025 QTY 2



Rear Seat Mount Adapter
These brackets allow for the Can-Am SXS/UTV lineup to accept the RP Fatigue Mitigation and most aftermarket seats.

PART NO. / FEATURE
2504-1040 QTY 2



Rear Bench Seat Bracket
This bracket attaches the RP Fatigue Mitigation bench seat or 2 folding seats to the vehicle bed. Includes lap belts. (Requires additional seat(s) purchase.)

PART NO. / FEATURE
2505-0160 QTY 1

Seats and brackets available for: Strike-C, C4, M, M4, Polaris, John Deere, Kawasaki Teryx T4 2014, Kawasaki Teryx/Rhino 2012 & earlier



RP Advanced Mobile Systems Coatings, Components & Accessories

ATV Tires & Tracks

For more information on RP Tires see page 8 and 9.



RP SOF Series II 26-Inch High Performance & Run-Flat Off-Road Tire
Multi-directional tread with wide contact patch and reinforced sidewall. 8-PLY ATV & 12-PLY UTV Run-Flat capability.

PART NO. / FEATURE / WEIGHT			
ATV RUN-FLAT			
3200-0117	8-PLY / 26x9x12	27 lbs	
3200-0123	8-PLY / 26x9x14	28 lbs	
UTV RUN-FLAT			
3200-0119	12-PLY / 26x9x12	34 lbs	
3200-0126	12-PLY / 26x9x14	35 lbs	

Deployed by U.S. Military and Law Enforcement
ATV/UTV/LTATV Tactical Off-Road Operations



RP SOF Spartan Series UTV Run-Flat Off-Road Tire
An aggressive military derived UTV tire that is ultra-durable and made to last. Universal sizes of 24-, 25-, 26-, 27-, and 29-inches, with wider tires for the rear.

PART NO. / FEATURE			
3200-0495	12-PLY / 24x11x10	31 lbs	
FRONT			
3200-0500	12-PLY / 25x8x12	28 lbs	
3200-0510	12-PLY / 26x9x12	33 lbs	
3200-0520	12-PLY / 26x9x14	36 lbs	
3200-0527	12-PLY / 27x9x12	34 lbs	
3200-0530	12-PLY / 27x9x14	39 lbs	
3200-0540	12-PLY / 29x9x14	43 lbs	
REAR			
3200-0505	12-PLY / 25x10x12	35 lbs	
3200-0515	12-PLY / 26x11x12	42 lbs	
3200-0525	12-PLY / 26x11x14	42 lbs	
3200-0528	12-PLY / 27x11x12	42 lbs	
3200-0535	12-PLY / 27x11x14	44 lbs	
3200-0545	12-PLY / 29x11x14	47 lbs	



RP Delta FX Series 27-Inch Dune/Desert Tire
Durable nylon cord construction. Extra wide 5/8" center rib with 24 tapered 5/8" reinforced directional paddles.

PART NO. / FEATURE			
3200-0120	4-PLY / 27x10x14	22 lbs	
3200-0125	4-PLY / 27x13x14	24 lbs	



RP SOF Series IV 27-Inch High Performance Run-Flat On/Off-Road Tire
New 27-inch size and aggressive desert stylized multi-directional tread with wide contact patch, reinforced sidewall. DOT CERTIFIED.

PART NO. / FEATURE / WEIGHT			
ATV RUN-FLAT			
3200-0350	8-PLY / 27x9x14	32 lbs	
3200-0355	8-PLY / 27x11x14	36 lbs	
ATV/SSV RUN-FLAT			
3200-0360	12-PLY / 27x9x14	37 lbs	
3200-0365	12-PLY / 27x11x14	43 lbs	



RP SOF Series IV Magnum 30-Inch On/Off-Road Tire
30-inch size with the same aggressive desert stylized multi-directional tread, wide contact patch, and reinforced sidewall. DOT CERTIFIED.

PART NO. / FEATURE / WEIGHT			
3200-0385	12-PLY / 30x10x14	45 lbs	



RP SOF Talon Series Run-Flat On/Off-Road Tire
This 12-ply rated, run-on-flat UTV tire upholds our high standard for durability and rigidity, while offering a uniquely angled tread. This wear-resistant tread style creates minimal road noise and a smoother ride on and off pavement.

PART NO. / FEATURE			
FRONT – UTV RUN-FLAT			
3200-0600	12-PLY / 25x8x12	31 lbs	
3200-0610	12-PLY / 26x9x12	33 lbs	
REAR – UTV RUN-FLAT			
3200-0605	12-PLY / 25x10x12	37 lbs	
3200-0615	12-PLY / 26x11x12	42 lbs	



Apache 360 LT Track System	
PART NO. / FEATURE	
715000959	Apache 360 LT Tracks
715002031	C/C4 Track Mounting Kit
715002215	M/M4 Track Mounting Kit
715000953	Air Intake Pre-Filter



RP Advanced Mobile Systems Coatings, Components & Accessories

Tactical Accessories & Upfits



ITP Delta 12-Inch Steel Wheel
Lightweight precision-rolled rims with D-shaped cutouts and a tough powder coat finish. Black, Desert Tan.

PART NO. / FEATURE	
3200-0006	Each / 12x7 [4+3] 4/137
3200-0006	Set of 4 / 12x7 [4+3] 4/137



Method 401 UTV Beadlock Wheel
The 401 includes a forged 6061 beadlock along with Grade 8 Zinc plated mounting hardware. Load rating of 1600 lbs., Matte Black.

PART NO. / FEATURE	
3200-0440	14x7 [5+2] 4/136



Method Mesh UTV Wheel
The Mesh UTV wheel comes in 12"-14", and has replaceable stainless steel decorative bolts with a screw-on hub. Matte Black.

PART NO. / FEATURE	
3200-0450	12x7, 12x8
3200-0455	14x7, 14x8, 14x10



A77 Mamba ATV/UTV Wheel
Ultra-strong and lightweight. Manufactured from aluminum with polished black accents, for today's larger ATV and UTV's. 4/110, 4/115, 4/137, 12mm and 4/156 bolt patterns, with [4+3], [2+5], and [5+2] offsets.

PART NO. / FEATURE	
12x7-A77	14x7-A77
15x7-A77	



A71 Mamba Beadlock Wheel
A fully functional, ultra-strong and lightweight wheel with a forged billet aluminum outer ring, and a strengthened inner lip. 16 (12") & 20 (14"/15") bolt beadlock system. 4/110, 4/115, 4/137, and 4/156 bolt patterns, with [4+3] and [5+2] offsets.

PART NO. / FEATURE	
12x7-A71-BD	14x7-A71-BD
14x8-A71-BD	14x10-A71-BD
15x7-A71-BD	



A71B Black Mamba Beadlock Wheel
Made of high-grade polished black aluminum with a billet beadlock ring, and plenty of bolts to prevent bead separation. 4/115, 4/137, and 4/156 bolt patterns, with [4+3] and [5+2] offsets.

PART NO. / FEATURE	
14x7-A71B-BD	14x8-A71B-BD
14x10-A71B-BD	15x7-A71B-BD



A82 Twist ATV Wheel
The Twist wheel has a unique 8-spoke design, the rim is machined from hi-grade aluminum with polished black accents. 4/110, 4/115, 4/137 12mm and 4/156 bolt patterns, with [4+3], [2+5], and [5+2] offsets.

PART NO. / FEATURE	
12x7-A82	
14x7-A82	



A79 Scorpion Wheel
The Scorpion wheel is a Raceline rim manufactured from aluminum with a black finish with a unique 8-spoke design. 4/110, 4/115, 4/137, and 4/156 bolt patterns, with [4+3], [2+5], and [5+2] offsets.

PART NO. / FEATURE	
12x7-A79	
14x7-A79	



Lug Nuts
These hardened steel lug nuts are the perfect addition to spruce up your custom wheels. Available in a tapered/flat interface design. Black.

PART NO. / FEATURE	
3200-0025 / Flat Base	
3200-0026 / Tapered Base	



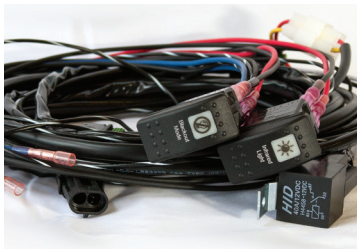
UTV Performance & High-Performance Shocks
Adjustable shocks, increase speed on rough terrain. Sold in pairs. From Elka Suspension.

PART NO. / FEATURE	
Strike-C, C4, M, M4, X, X4, D3, D6 Front & Rear. Call for more information.	
Stage 3	36mm, 46mm
Stage 4	36mm, 46mm
Stage 5	36mm, 46mm, 56mm



RP Advanced Mobile Systems Coatings, Components & Accessories

Tactical Accessories & Upfits



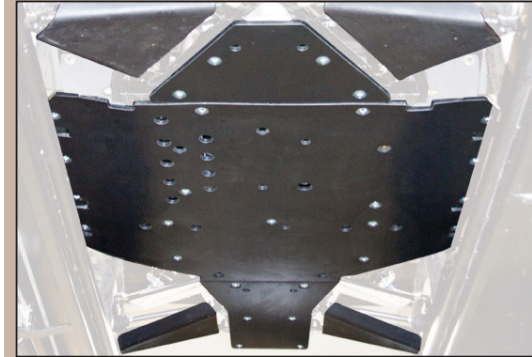
Blackout/IR Wiring Harness Kit with Rocker Switch
This kit permits the effective installation of IR illuminators and the added ability to 'black out' the dash lighting to prevent NVG bloom for night vision.

PART NO. / FEATURE	
2400-8000	Strike-C, C4, M, M4



Can-Am Keyless Ignition Kit, Locking Toggle
When installed, the vehicle can be started by switch 'hot' activation and push-to-start. Allows for maintaining the stowed key if vehicle security and low speed key EFI program (training) is necessary.

PART NO. / FEATURE	
2400-8010	Strike-C, C4, M, M4



UHMW Skid Plate
These UHMW Underbody Skid Plates were designed to handle the toughest of environments. They are a direct bolt-on solution to your UTV platform and offer unparalleled protection when put up against the OEM skid configuration.

Bringing more *ASSETS* to the fight!



PART NO. / FEATURE	
Baja Designs, OnX	
2400-1002	4" IR LED Light, Qty 1
2400-0250	4" IR LED Light Bracket, Strike-C/C4, Forward, Qty 1
45-0803	8" Driving/Combo LED Light Bar, One Cell, Qty 1
2400-1003	12" White/IR LED Light Bar (8" White/4" IR), Qty 1
2400-0150	8"/12" LED Light Bracket, Strike-C/C4, Forward, Qty 1
2400-0220	8"/12" LED Light Bracket, Strike-M/M4, Forward, Qty 1
Baja Designs, S8	
70-4003	40" Driving Combo LED Light Bar, Qty 1
Baja Designs, Stealth	
64-0147	40" LED Rock Guard Light Bar, Qty 1
LED-BAR_MOUNT	40" LED Roll Cage Mount, Black, Qty 1
Baja Designs, OnX6	
45-1003	10" Driving-Combo LED Light Bar, Qty 1
45-2003	20" LED Light Bar, Qty 1
45-3003	30" LED Light Bar, Qty 1
45-4003	40" LED Light Bar, Qty 1
45-5003	50" LED Light Bar, Qty 1
Baja Designs, OnX6 Arc	
52-3001	30" LED High Speed Spot Light Bar, Qty 1
52-4001	40" LED Light Bar, Qty 1
52-5001	50" LED Light Bar, Qty 1
Baja Designs, XL80	
67-0005	LED Wide Cornering Light, Qty 1
67-7805	LED Wide Cornering Light, Pair
Baja Designs, XL-R80	
76-0003	LED Driving-Combo Light, Qty 1
76-7803	LED Driving-Combo Light, Pair
Baja Designs, Squadron Pro	
49-7093	940nm IR LED Driving Light, Qty 1
Baja Designs, S2 Pro	
48-7093	940nm IR LED Driving Light, Qty 1
48-0003	LED Driving/Combo Light, Black, Qty 1
48-7803	LED Driving/Combo Light, Black, Pair
48-0003WT	LED Driving/Combo Light, White, Qty 1
48-3103	LED Spot Light, Colored Lenses (Colors Available: Blue, Red & Green), Qty 1
LED Wire Harness	
2400-1006	12v 3 PIN Universal, Qty 1





RP Advanced Mobile Systems Coatings, Components & Accessories

Tactical Accessories & Upfits



Multimount Winch Kit

Provantage 4500-S Winch Kit

Pulling strength capability 4,500 lbs (2,041 kg). Includes 55' of 7/32" (15.2 m of 5.5 mm) synthetic rope, with double-powdercoated hawse fairlead. (Requires Winch & Hitch Support Plate 2504-1065.)

PART NO. / FEATURE
715002501



Multimount Winch Kit

Provantage 4500 Winch Kit

Pulling strength capability of 4,500 lbs (2,041 kg). Includes 55' of 7/32" (16.8 m of 5.5 mm) wire steel cable, with roller fairlead. (Requires Winch & Support Plate 2504-1065.)

PART NO. / FEATURE
715002560

Multimount Winch Kit

Can be mounted to front or rear of vehicle and comes complete with front and rear wire harness. Front 2" receiver is required for installation.

PART NO. / FEATURE
715000659 Rear/Strike-C, C4
715002068 Front & Rear/Strike-M, M4
Call for Strike-X, X4 and Strike-D3, D6

Winch & Hitch Support Plate

Mounting plate and 2" front receiver hitch.

PART NO. / FEATURE
2504-1065 Front/Strike-C, C4

Synthetic Winch Cable

50 feet of 7/32" 4500 lb. synthetic cable for 4500/4500-S Warn Winches.

PART NO. / FEATURE
715001118

Note: When replacing a wire rope with synthetic, it is necessary to replace the fairlead to avoid damage and wear to the new synthetic rope from the rough surface of the old fairlead.



RP Initial Spare Parts Kit

A must-have for extended and remote operations. Kits include two sets of: Pre-filters, air filters, O-rings, rear/front brake pads, spark plugs, oil filters, v-belts.

PART NO. / FEATURE
2508-0100-COM Strike-C, C4
2508-0100-MAV Strike-M, M4 + tie rods
2508-0100-X3 Strike-X, X4
2508-0100-DEF Strike-D3, D6

PowerAll® Jump Start

This device is a must have in any CVT drive system vehicle that cannot be jump or push started. Compact, lightweight and able to jump start a completely dead vehicle multiple times. Added features: Multiple connectors, rechargeable from the vehicle with flashlight.

PART NO. / FEATURE
2400-1590 Goliath 24V 32,000 mAh*
2400-1595 Supreme 12V 16,000 mAh
2400-1620 Deluxe 12V 12,000 mAh
*For use on 24V vehicles ONLY.

PowerAll® Journey

All-in-one portable 600A 12V jump starter with built-in BlueTooth™ Speaker.

PART NO. / FEATURE
2400-1596 Journey



Starter units
not included

RP Jump Starter Cases

Hard case fits all sizes of PowerAll and RP Portable Power Bank units. The soft MOLLE case is available in two sizes - Small: All PowerAll 12V starters; Large: Goliath and RP 12V/24V Power Banks.

PART NO. / FEATURE
2504-2060 Hard Case
2504-2050 Small Soft MOLLE Case
2504-2055 Large Soft MOLLE Case

RP Portable Power Bank

The perfect solution for battery power loss. Most modern CVTs can not be bump or push started, leaving you stranded. This small unit is fully capable of jump starting your vehicle multiple times and can charge your smartphones, cameras, GPS units and portable comms using COTS connectivity. These units also come equipped with an SOS emergency LED flashlight capable of lasting up to 160 hours.

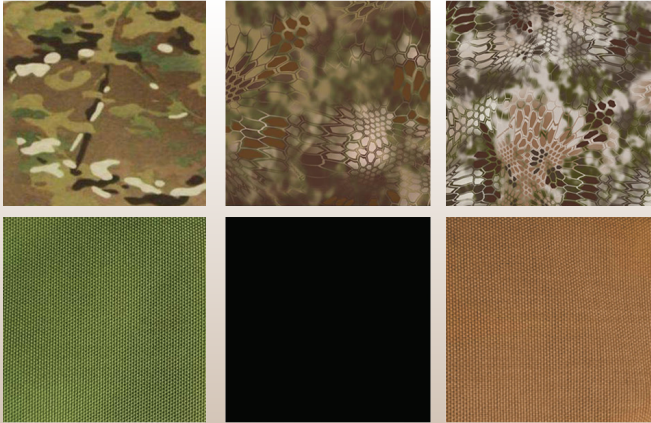
PART NO. / FEATURE
POWER BANK UNIT / HARD CASE
2400-8040-12V-C 12V (400A)*
2400-8050-24V-C 24V (800A)**
POWER BANK UNIT / SOFT MOLLE CASE
2400-8040-12V-M 12V (400A)*
2400-8050-24V-M 24V (800A)**

*Water resistant.
**For use on 24V vehicles ONLY.



RP Advanced Mobile Systems Coatings, Components & Accessories

Tactical Accessories & Upfits



Fabric Swatches

Available in (left to right): OD Green, MultiCam®, Black, Kryptek Mandrake™, Coyote Brown and Kryptek Highlander™



5x8 Utility Pouch Horizontal

The Horizontal 5x8 Utility Pouch features a loop panel on the outside for the attachment of IFF items or morale patches. Made from 500D Cordura® nylon and attaches to any MOLLE/PALS style webbing with the two Malice Clips®.

PART NO. / FEATURE
UTPOUCH QTY 2

5x8 Utility Pouch Vertical

A general purpose pouch or small IFAK. It features a loop panel on the outside for the attachment of IFF items or morale patches. Made from 500D Cordura® nylon and attaches to any MOLLE/PALS style webbing with the two Malice Clips®.

PART NO. / FEATURE
UTPOUCHVERT QTY 2



Multipurpose Pouch

A medium sized pouch accommodates a small pair of binoculars or one 10 round .50 cal Barrett magazine. The front pocket is ideal for handcuffs, compass etc. It features an adjustable buckle and attaches to any MOLLE/PALS webbing with the MALICE Clips®. Made of 500D Cordura® nylon.

PART NO. / FEATURE
MULTIPOUCH QTY 2



Multi-Tool Pouch

Designed to hold regular size multi-tools or folding knives. The pouch can also hold one pistol magazine for security instead of speed. Size is 5 x 2 x 1.5 inches. The flap has an adjustable Fastex buckle. Attaches to almost any MOLLE/PALS style system with the MALICE Clip®.

PART NO. / FEATURE
MULTITOOLPOUCH QTY 2



Flashlight Pouch

Accommodates handheld lights including the Surefire® 6P, G2 and E Series, as well as tactical lights from Streamlight, Insight and other small lights. Constructed from 500D Cordura® nylon with a lightweight lining for durability and attaches MOLLE/PALS style webbing with the Malice Clips®.

PART NO. / FEATURE
FLASHPOUCH QTY 2



Knife Pouch

This pouch will hold a large sized folding knife, SureFire flashlight, or an extra pistol mag. The flap is removable and adjustable. Attaches to any MOLLE/PALS style gear with the MALICE Clip®. Measurements: 5" x 1.5" x 1."

PART NO. / FEATURE
KNIFEPOUCH QTY 2



Double M4 & Pistol Pouch

Designed to carry two 5.56mm 30 round and two pistol magazines in one pouch. It is sized to carry the majority of pistol mags, both single and double stacked mags. Elastic sewn into the front pouches for mag retention when the flaps open. Elastic loops added on each side to carry Chem Lights or other accessories. Constructed of 500D Cordura® and features bungee retention for the 5.56 mags, and attaches to any MOLLE/PALS system with the MALICE Clips®.

PART NO. / FEATURE
FLASHPOUCH QTY 2



Small MEDIC Pouch

Designed to hold all your trauma gear in a compact pouch. Inside are two large mesh pockets with elastic straps for retention and on the outside is a small pocket for trauma shears. Constructed of 500D Cordura® nylon and attaches to any MOLLE/PALS style webbing using two long MALICE Clips®.

PART NO. / FEATURE
FLASHPOUCH QTY 2

Medical supplies not included.

**Other products available.
Visit GreyGhostGear.com**





RP Advanced Mobile Systems Coatings, Components & Accessories

Fire Skid, SAR Equipment & Accessories



QTACTM 85S Firefighting Skid

Designed to fit most SXS UTVs. Lightweight and simple to use with a 73 GPM pump with a 6 hp engine.

PART NO. / FEATURE
QTACTM-85S



QTACTM 85SEMS-C Firefighting Skid

This QTAC 85S UTV EMS system includes a flip-down litter carrier.

PART NO. / FEATURE
QTACTM-85SEMS-C



NATO Litter

Provides casualty transport in restricted compartments, within the Max variants of the RP Strike vehicles (with folding rear seat and litter restraint options). Certified Safe-to-Fly, ergonomically designed handles, automatic locking hinges, slip-and chemical-resistant ripstop fabric. Folds for easy storage.

PART NO. / FEATURE
2504-0850



Stokes Litter Carrier

The Stokes Litter is designed to rescue persons from complex and challenging locations where access is limited. Available as 1-Piece or 2-piece (break-away) and built to US MIL SPECS RR-L-1997 & MIL-L-37957. Made of steel, all welded rigid construction.

PART NO. / FEATURE
JSA-300-W

RP Litter Rail System, see page 13 & 18.

For More Information on QTAC Skids See Page 14
or visit www.QTACfire.com.





**RP Advanced
Mobile Systems™**

Veteran and Minority Owned Business

11160 SW Durham Lane, Suite 3 | McMinnville, Oregon 97128

Office (503) 434-9446 | fax (504) 217-6080

For inquiries call Terry Wilmeth (971) 237-3217 or Jim Baynes (503) 348-7950

www.RPAMS.com | CustomerService@rpams.com

RP ADVANCED MOBILE SYSTEMS PROVIDES COMPLETE FABRICATION AND RAPID PROTOTYPING
OF ENGINES, PARTS AND TURN-KEY ENGINEERING SUPPORT.

All pricing, specifications, claims and information contained in this brochure are based on information available at the time of publication and are subject to change without notice. RP Advanced Mobile Systems, LLC assumes no responsibility for any inaccuracies, opinion, errors or omissions in those publications, nor fitness of purpose and non-infringement of intellectual property.